

PRODIGY[®]
ELITE

MC0522 - 500lb Cube Ice Machine

Prodigy ELITE[®] Modular Cube Ice Machine

ENHANCED RELIABILITY

Integrated ICELINQ[®] App

Provides real-time diagnostics, access to settings and guided cleanings. The app also contains specific information for convenient maintenance.

Upgraded Sensors

Ice thickness and water sensor design enhances cleanability and amplifies durability.

Preservation Mode

Maximizes uptime and notifies users of potential issues.

EASE OF USE

AutoAlert[™] Panel

The AutoAlert[™] panel displays relevant machine status that is visible across the room. Now featuring an external bin full indicator light and easier to read 16-segment display.

SANITARY DESIGN

Removable, External Air Filters

Speeds up cleaning process and reduces unit footprint.

WaterSense Adaptive Purge

Optimizes water consumption, keeping the machine cleaner and operating more efficiently.



Compatible with ICELINQ[®]



The ICELINQ[®] app simplifies interaction with machine via Bluetooth[®] connection



Intelligent sensor technology maximizes efficiency and lowers operating costs



24 Hour Volume Production

| Air Cooled | | Water Cooled | |
|------------------------|--------------|------------------------|------------------------|
| 70°F/21°C 50°F/10°C | Air Water | 90°F/32°C 70°F/21°C | 70°F/21°C 50°F/10°C |
| 464/211 lb/kg | | 342/155 lb/kg | 510/232 lb/kg |



Modular Bin Options

| Model Number* | Dimensions W" x D" x H" | Bin Application Capacity lb/kg | Finish | Ship Weight lb/kg |
|---------------|-------------------------|--------------------------------|----------|-------------------|
| B322S | 22 x 34 x 44** | 370/168 | Metallic | 140/64 |



B322S

* Contact Scotsman for bin top requirements.



Cube Ice

Common ice form, ideal for mixed drinks.



Small Cube
7/8" x 7/8" x 3/8"
(2.22 x 2.22 x .95 cm)



Medium Cube
7/8" x 7/8" x 7/8"
(2.22 x 2.22 x 2.22 cm)



Certification



CERTIFIED
ISO
9001:2015



agion[®]
Nature's antimicrobial



ICELINQ[®]



Warranty

- 3 Years parts and labor on all components.
- 5 Years parts and labor on the evaporator.
- 5 Years parts on the compressor and condenser.
- Warranty valid in North, South & Central America for commercial installations.
- Contact factory for warranty in other regions.
- Residential Applications: 1 year parts and labor

Scotsman[®]

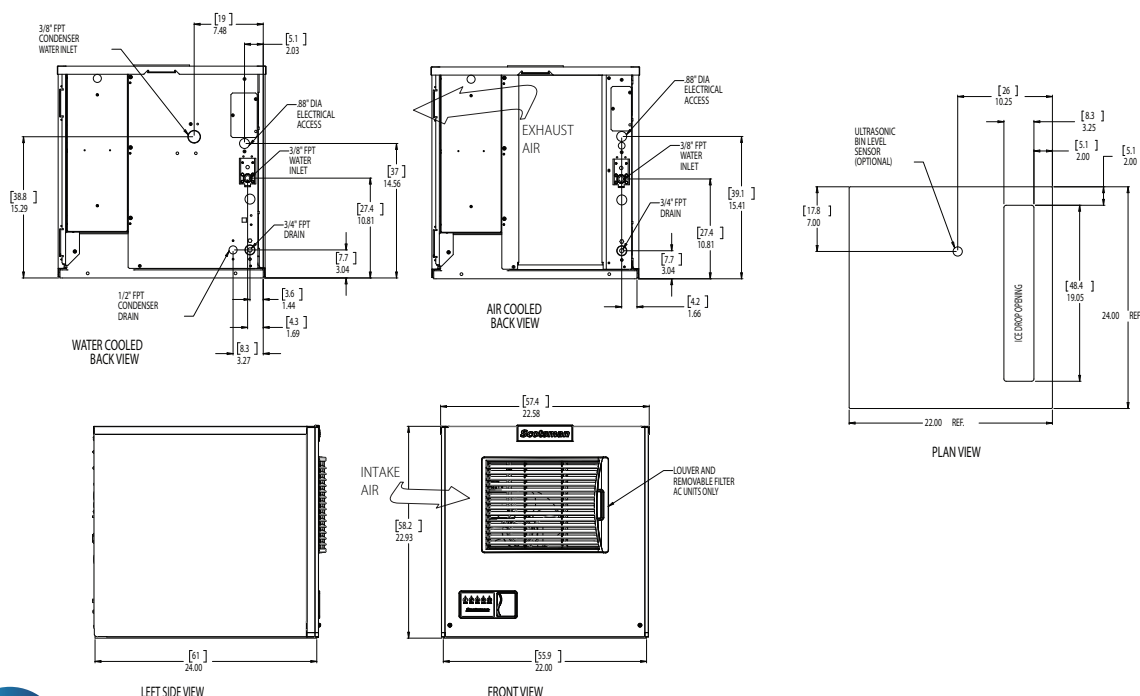
101 Corporate Woods Parkway, Vernon Hills, IL 60061

1-800-SCOTSMAN | Fax: 847-913-9844 | www.scotsman-ice.com | customer.relations@scotsman-ice.com

MC0522 - 500lb Cube Ice Machine

MC0522 - 500lb Cube Ice Machine

Prodigy ELITE® Modular Cube Ice Machine



Specifications

| Model Number | Condenser Unit | Basic Electrical Volts/Hz/Phase | Max. Fuse Size or HACR Circuit Breaker (amps) | Circuit Wires | Min. Circuit Ampacity | Energy Consumption kWh/100 lb (45.4 kg) 90°F(32°C)/70°F(21°C) | Water Usage Gallons/100 lb (liters/45.4 kg) | |
|------------------|----------------|---------------------------------|---|---------------|-----------------------|---|---|---------------------------------|
| | | | | | | | Potable 90°F(32°C)/70°F(21°C) | Condenser 90°F(32°C)/70°F(21°C) |
| med. MC0522MAX-1 | Air | 115/60/1 | 15 | 2 | 11.1 | 5.09 | 18.7/71.1 | - |
| MC0522MWX-1 | Water | 115/60/1 | 15 | 2 | 9.5 | 4.10 | 17.5/66.5 | 203.0/771.4 |
| MC0522MAX-32 | Air | 208-230/60/1 | 15 | 2 | 5.9 | 5.09 | 18.7/71.1 | - |
| sm. MC0522SAX-1 | Air | 115/60/1 | 15 | 2 | 11.1 | 5.09 | 18.7/71.1 | - |
| MC0522SWX-1 | Water | 115/60/1 | 15 | 2 | 9.5 | 4.10 | 17.5/66.5 | 203.0/771.4 |
| MC0522SAX-32 | Air | 208-230/60/1 | 15 | 2 | 5.9 | 5.09 | 18.7/71.1 | - |
| MC0522SWX-32 | Water | 208-230/60/1 | 15 | 2 | 5.0 | 4.10 | 17.5/66.5 | 203.0/771.4 |



All Models

Dimensions (W x D x H):

Unit: 22" x 24" x 23"
(55.9 x 61.0 x 58.4 cm)

Shipping Carton: 26" x 28" x 29"
(66 x 71.1 x 73.7 cm)

Shipping Weight: 160 lb / 73 kg BTUs per hour: 7,900

| Model Number | Refrigerant | Refrigerant Charge (oz) |
|--------------|-------------|-------------------------|
| MC0522MAX-1 | R290 | 6.5 |
| MC0522MWX-1 | R290 | 5.25 |
| MC0522MAX-32 | R290 | 6.5 |
| MC0522SAX-1 | R290 | 6.5 |
| MC0522SWX-1 | R290 | 5.25 |
| MC0522SAX-32 | R290 | 6.5 |
| MC0522SWX-32 | R290 | 5.25 |



Accessories

| Model Number | Description |
|--------------|---|
| KVS | Vari-Smart™ Ice Level Control - Precisely control ice levels using ultrasonic technology. |
| KBILC | Basic Ice Level Control - Thermistor technology, ideal for dispenser applications. |
| KSBU | Smart-Board™ Advanced Control - Use additional operational data for fast diagnosis. |
| KSBU-N | Smart-Board™ Advanced Control with Network - Network capable. |
| KPAS | Prodigy Advanced Sustainability Kit - Includes KVS and KSBU - N |
| XR-30 | XSafe® Sanitation System for Modular Cube - Continuous operation, field-installed. |

Scotsman recommends all ice machines have water filtration. See Scotsman water filter specification sheet for details.



Operating Requirements

| | Minimum | Maximum |
|------------------------|-------------------|---------------------|
| Air Temperatures | 50°F (10°C) | 100°F (38°C) |
| Water Temperatures | 40°F (4.4°C) | 100°F (38°C) |
| Remote Cond. Temps | -20°F (-29°C) | 120°F (49°C) |
| Potable Water Pressure | 20 PSIG (1.4 bar) | 80 PSIG (5.5 bar) |
| Cond. Water Pressure | 20 PSIG (1.4 bar) | 230 PSIG (16.1 bar) |
| Electrical Voltage | -5% | +10% |

Specifications and design are subject to change without notice.